

12.8V20Ah

LFP LI-ION BATTERY



SAFETY

- + Cylindrical LiFePO4 cells (32650-5Ah), High consistency, long cycle life and much more safety.
- + UN38.3, CE certification for system.
- + The cycle life over 2000 times @80%DOD

DESIGN

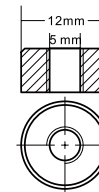
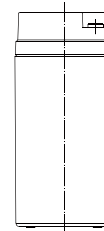
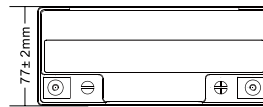
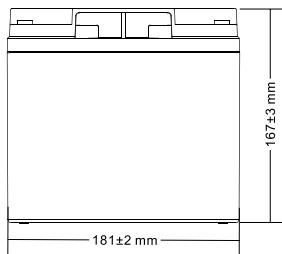
- + ABS container, replace VRLA battery perfectly.
- + Fast charge performance.
- + -20~+55° C widely temperature range.
- + Maintenance free.

BATTERY MANAGEMENT SYSTEM (BMS)

- + Integrated hardware BMS inside.
- + Independent protection for charge and discharge.
- + Over voltage, low voltage, over temperature and short circuit protection.



Dimension:



F13 Terminal

Unit: mm

Specification

Part Number	R-LFP12.8V20Ah
Nominal Voltage [V]	12.8
Nominal Capacity [Ah]	20
Total Energy [Wh]	256
Max. Charging Current [A]	20
Recommended Charging Current [A]	10
Charging Voltage [V]	14.6
Max. Discharging Current [A]	20
End of Discharge Voltage [V]	11.2
Pulse Discharge Current	50A @ 10s
Dimension [W*D*H, mm]	181*77*167
Weight [Kg]	2.90
Operation Humidity	0~95% RH (No condensing)
Operating Temperature Range	Charge: 0 ~ +50 °C ; Discharge: -20 ~ +55 °C
BMS Protection	Over charge Over discharge, Over temperature, Short circuit
Parallel Support	Yes, Max 2 Sets
Series Support	Yes, Max 4 Sets
Cycle Life	>2000
Designed Calendar Life	>10 Years
Certification	UN38.3, CE, MSDS

Note:

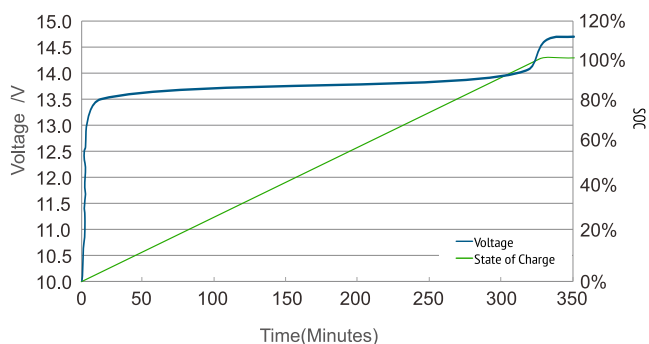
1. 80% DOD and to 80% of initial capacity.



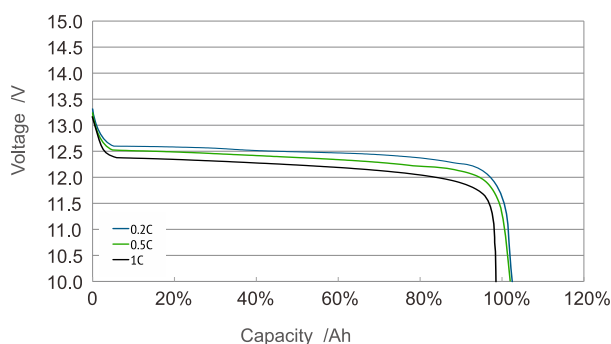
12.8V20Ah

(R-LFP12.8V20Ah)

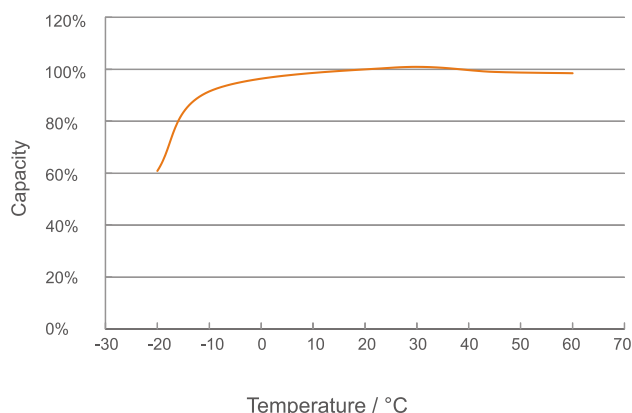
CHARGE VOLTAGE and STATE OF CHARGE(SOC) CHARGE 0.2C@25°C(77°F)



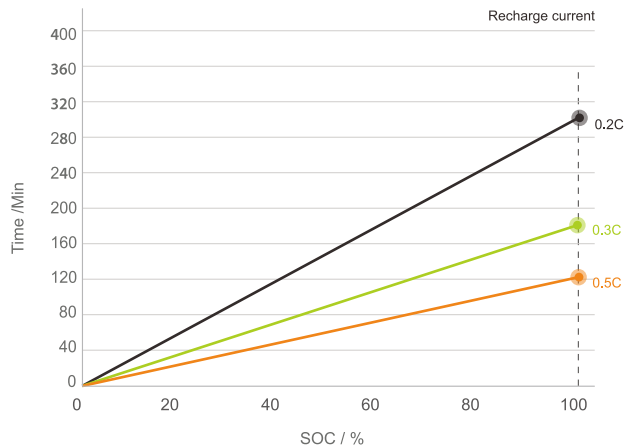
DISCHARGE VOLTAGE CHARACTERISTICS at VARIOUS RATES 25-C(77°F)



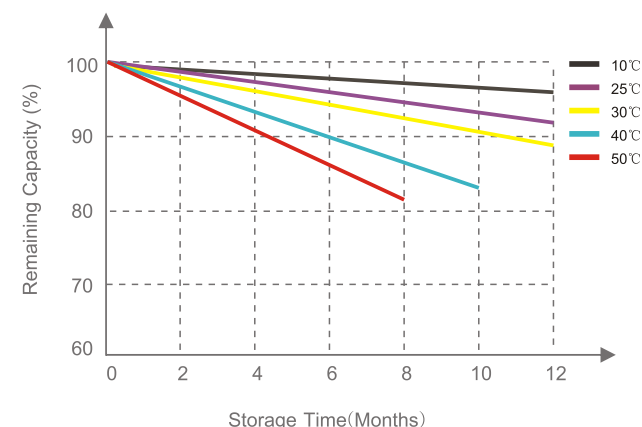
Capacity with Different Temperature



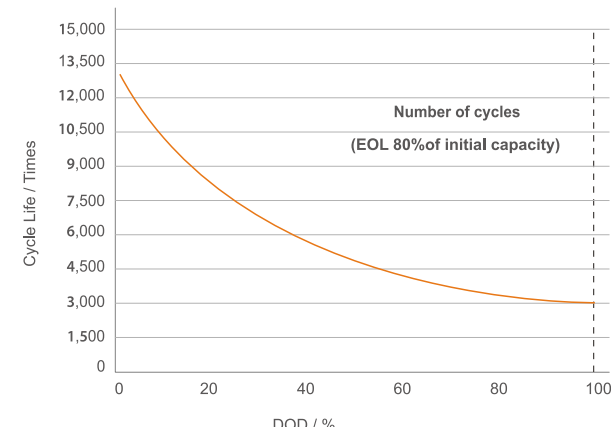
Typical Recharge Time



Different Temperature Self Discharge Curve



Typical Cycle Life



The datasheet is subject to change without prior notification

For more information, contact with : sales@ritarpower.com